

3900 Jackshaft Door Operator For Light-Duty Commercial Applications



**LiftMaster®
Commercial Door
Operators**
are engineered,
manufactured and tested
to provide reliable service
to meet the toughest
commercial applications.

- For use on light-duty commercial standard, vertical and high-lift sectional doors
- Ideal for limited height, cathedral or obstructed ceiling installations
- The Protector System® safety sensors reverse the door automatically if the infrared beam is broken, before contact is made
- Cable tension monitor eliminates cable throw
- UL325 compliant
- Lifetime motor warranty



APBS

CHAMBERLAIN®

LiftMaster®

COMMERCIAL DOOR OPERATOR

3900

MODEL

3900

COMMERCIAL DOOR OPERATOR

Standard Features

- **Motor**
Heavy-duty 24V DC motor provides ultra-quiet operation, along with variable speed smooth start and stop.
- **Rated up to 10 Cycles per Hour**
- **Push Button Limit Settings**
- **Compact Design**
- **Lifetime Motor Warranty**
- **UL 325 Compliant**

Additional Features

- **Quick-Connect™ Terminals**
For faster wire installation.
- **6-Foot Power Cord**
Makes connecting to a power source easier than ever.

Installation Features

- **Wall-Mount Installation**
Mounts on the left or right side of door. No rails to hang, the operator simply mounts on the wall and attaches to the door torsion bar. Unit requires an electrical outlet within 6 feet.
- **Patented Absolute Positioning Technology**
The newest technology in commercial door openers. This patented design allows the electronic limits to be extremely accurate, even after a power failure.

Installation Requirements

- **For standard, vertical and high-lift commercial sectional doors with torsion assemblies.**
- **For doors up to 14 feet high, 18 feet wide or 180 square foot maximum.**
- **Maximum allowable door weight is 650 lbs.**

Standard Accessories

- **The Protector System® Safety Sensor**
Projects an invisible beam across commercial door opening. If anything interrupts the beam while the door is closing, door automatically reverses before making contact. If beam is obstructed, door will not close.
- **Cable Tension Monitor**
Cable tension monitor eliminates cable throw and will reverse the door when excessive slack is detected.
- **APBS Single Button Control Station**
May be used as OPEN and CLOSE with type B2 control wiring.

Optional Accessories

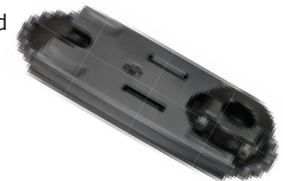
- **Power Door Lock**
The lock prevents the door from being manually forced opened once fully closed.



- **EverCharge® Standby Power System**
During a power failure, the standby power system will operate the door opener for up to 20 full cycles within a 24-hour period.



- **Alternate Mounting Kit**
Allows operator to be mounted below the torsion bar when the torsion bar is not round or the normal mounting area is obstructed.



- **Remote Work Light**
Add as many lights as required. All lights can be turned on and off by opener activation.



CHAMBERLAIN®

LiftMaster®

THE CHAMBERLAIN GROUP, INC.
845 Larch Avenue • Elmhurst, IL 60126

www.liftmaster.com • <http://specs.chamberlain.com/architectscorner>



Chamberlain reserves the right to make design or specification changes without notice.
©2008 The Chamberlain Group, Inc. Printed in U.S.A. 6/08 LMCD3CJO